

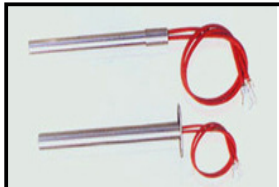
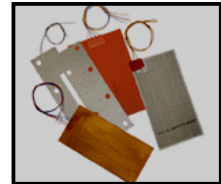
TUBULAR/FLAT HEATER & CONTROLLERS

Introduction:

MHCT/MHTT/MHPT series of D.C. precision heater/ (tubular/planar) are available in many sizes and shapes virtually offering solutions to biotechnology, electrical measurement/protection, telecom, power systems, general industrial electronic utilities, process industries, public transportation, public/industrial load carriage, non conventional energy management applications, nuclear and defense, polymers and many other research & applications. Company also offers signal conditioners compatible with precision heater/ (tubular/planar).

Feature:

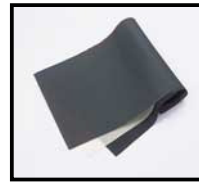
- Material: Eureka/Nichrome/zeranin/or oxide alloy/ thick film /tungsten (heater)/thermoelectric ()
- Compact with high tolerance
- Low TCR with large peak current carrying capacity
- Large pulse current/weight ratio, large surface temperature< +/- 400degree cel



MICRO TUBULAR HEATER/



INLINE HEATER/



POLYESTER BASED FLEXIBLE HEATER



PTFE COATED STRIPE TYPE HEATER/

Electrical specifications of Tubular/inline heater

Power <20000 watts

model	Surface	voltage AC/DC	Power watts	Size m.m O.D./L (I.D.=0.5-5)	model	Surface °C	voltage AC/DC	Power watts	Size m.m O.D./L (I.D.=0.5-10)
MHHT-0001	100-400	12/24/110/220	1.0	1.5-5/30-80	MHHT-0200	100-400	12/24/110/220	200	8-15/60-200
MHHT-0005	100-400	12/24/110/220	5.0	1.5-5/30-80	MHHT-0400	100-400	12/24/110/220	400	10-20/60-200
MHHT-0010	100-400	12/24/110/220	10.0	1.5-5/30-80	MHHT-0600	100-400	12/24/110/220	600	12-18/60-200
MHHT-0020	100-400	12/24/110/220	20.0	1.5-5/30-80	MHHT-0800	100-400	12/24/110/220	800	15-24/60-200
MHHT-0050	100-400	12/24/110/220	50.0	1.5-8/30-90	MHHT-1000	100-400	12/24/110/220	1000	15-24/60-200
MHHT-0100	100-400	12/24/110/220	100.0	1.5-10/30-150	MHHT-2000	100-400	12/24/110/220	2000	15-24/60-200
MHHT-0150	100-400	12/24/110/220	150.0	1.5-10/30-200	MHHT-5000	100-400	12/24/110/220	5000	8-15/60-200

Electrical specifications of CARTRIDGE HEATER

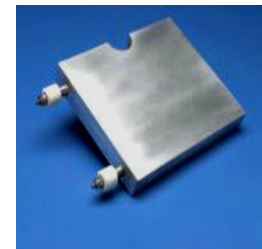
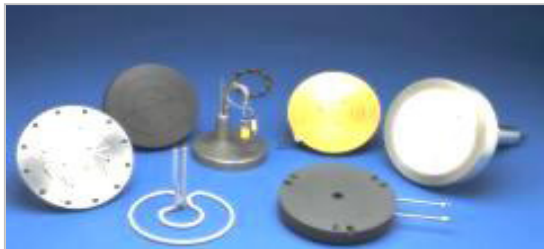
Power <20000 watts

model	Surface	voltage AC/DC	Power watts	Size m.m O.D./L	model	Surface °C	voltage AC/DC	Power watts	Size m.m O.D./L
MHCT-0001	100-400	12/24/110/220	1.0	1.5-5/30-80	MHCT-0200	100-400	12/24/110/220	200	8-15/60-200
MHCT-0005	100-400	12/24/110/220	5.0	1.5-5/30-80	MHCT-0400	100-400	12/24/110/220	400	10-20/60-200
MHCT-0010	100-400	12/24/110/220	10.0	1.5-5/30-80	MHCT-0600	100-400	12/24/110/220	600	12-18/60-200
MHCT-0020	100-400	12/24/110/220	20.0	1.5-5/30-80	MHCT-0800	100-400	12/24/110/220	800	15-24/60-200
MHCT-0050	100-400	12/24/110/220	50.0	1.5-8/30-90	MHCT-1000	100-400	12/24/110/220	1000	15-24/60-200
MHCT-0100	100-400	12/24/110/220	100.0	1.5-10/30-150	MHCT-2000	100-400	12/24/110/220	2000	15-24/60-200
MHCT-0150	100-400	12/24/110/220	150.0	1.5-10/30-200	MHCT-5000	100-400	12/24/110/220	5000	8-15/60-200

Electrical specifications of PLANAR HEATER

Power <20000 watts

model	Surface	voltage AC/DC	Power watts	Size m.m [L/B/H]/[D/H]	model	Surface °C	voltage AC/DC	Power watts	Size m.m [L/B/H]/[D/H]
MHPH-0001	100-400	12/24/110/220	1.0	Tailor specs	MHPH-0200	100-400	12/24/110/220	200	Tailor specs
MHPH-0005	100-400	12/24/110/220	5.0	Tailor specs	MHPH-0400	100-400	12/24/110/220	400	Tailor specs
MHPH-0010	100-400	12/24/110/220	10.0	Tailor specs	MHPH-0600	100-400	12/24/110/220	600	Tailor specs
MHPH-0020	100-400	12/24/110/220	20.0	Tailor specs	MHPH-0800	100-400	12/24/110/220	800	Tailor specs
MHPH-0050	100-400	12/24/110/220	50.0	Tailor specs	MHPH-1000	100-400	12/24/110/220	1000	Tailor specs
MHPH-0100	100-400	12/24/110/220	100.0	Tailor specs	MHPH-2000	100-400	12/24/110/220	2000	Tailor specs
MHPH-0150	100-400	12/24/110/220	150.0	Tailor specs	MHPH-5000	100-400	12/24/110/220	5000	Tailor specs



SPECIAL SHAPE HEATER/S FOR R&D/DEFENCE (tungsten/eureka/zeranin) FLEXIBLE HEATER/S PTFE coated hermetically sealed planar heater
 Three numerals x 100 after MHCT indicate current of precision heater/ (tubular/planar). Company offers battery/main operated precision heater/ (tubular/planar) motor controllers.

MOTORON SEMICONDUCTORS CORPORATION

11, Shri nagar colony, Shakti nagar extension, DELHI-110052. Tel:011-23648181/23655454

motoron@hotmail.com

TUBULAR/FLAT HEATER & CONTROLLERS

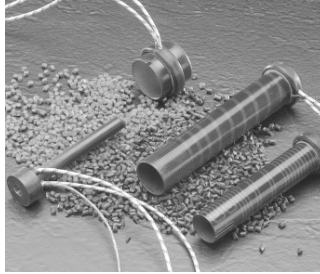
Electrical specifications of Thick Film Heater

Power <20000 watts

model	Surface	voltage AC/DC	Power watts	Size m.m [L/B/H]/[D/H]	model	Surface °C	voltage AC/DC	Power watts	Size m.m [L/B/H]/[D/H]
MTFH-0001	100-400	12/24/110/220	1.0	Tailor specs	MTFH-0200	100-400	12/24/110/220	200	Tailor specs
MTFH-0005	100-400	12/24/110/220	5.0	Tailor specs	MTFH-0400	100-400	12/24/110/220	400	Tailor specs
MTFH-0010	100-400	12/24/110/220	10.0	Tailor specs	MTFH-0600	100-400	12/24/110/220	600	Tailor specs
MTFH-0020	100-400	12/24/110/220	20.0	Tailor specs	MTFH-0800	100-400	12/24/110/220	800	Tailor specs
MTFH-0050	100-400	12/24/110/220	50.0	Tailor specs	MTFH-1000	100-400	12/24/110/220	1000	Tailor specs
MTFH-0100	100-400	12/24/110/220	100.0	Tailor specs	MTFH-2000	100-400	12/24/110/220	2000	Tailor specs
MTFH-0150	100-400	12/24/110/220	150.0	Tailor specs	MTFH-5000	100-400	12/24/110/220	5000	Tailor specs



Thick film heater over glass substrate



Thick film heater over glass tube



Thick film heater over disc substrate

Three numerals x 100 after MHCT indicate current of precision heater/ (tubular/planar). Company offers battery/main operated precision heater/ (tubular/planar) motor controllers.

MOTORON SEMICONDUCTORS CORPORATION

11, Shri nagar colony, Shakti nagar extension, DELHI-110052. Tel:011-23648181/23655454
 motoronenergy@hotmail.com