

SPECIAL PURPOSE D.C. MOTORS & CONTROLLERS

SPEM-Series

Introduction:

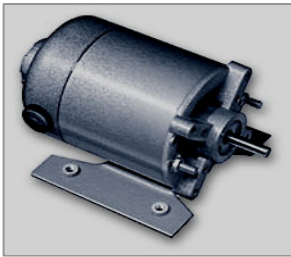
SPEM series of special purpose D.C. motors and controllers are available in more than 25 different modes, virtually offering solutions to speed/torque control applications for paper, wire drawing, printing, extrusion, biomedical, petrochemical, automobile, organic/inorganic chemical, milk plant, sugar, textiles, beverages, water management/treatment, non conventional energy management applications, nuclear and defense and many other research & development applications. Company also offers cascade -feedback control chopper drive system, which can be interactively coupled to drive the multi motors system in synchronous mode with high degree of resolution.

Feature:

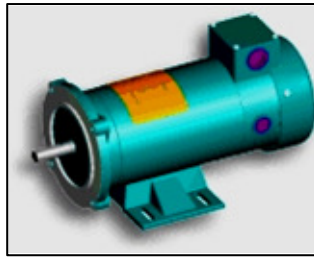
Compact and energy efficient
 Dynamically balanced & vibration-less motion
 Inherent self-braking acting action, thus less hunting.
 Maximum torque/k.watt.

Applications

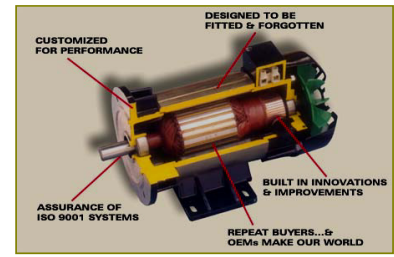
Textile, paper, corrugation, cement, Yarn, Sugar,
 Non-conventional energy, Breweries, Distillaries,
 Chemical, Heavy engineering, Petrochem,
 Medicine. defense. aerospace. automobile



SPEM- 001



SPEM-001



pictorial sectional view

ELECTRICAL/MECHANICAL SPECIFICATIONS OF SPECIAL PURPOSE MOTORS

POWER <2000 Watts

MODEL	Watts	R.P.M.X 100	Torque N.m	Volts D.C.	Amps D.C.	Mounting	Tmax °C
SPEM-001	100.0	09/15/30/60	1.06/0.52/0.26/0.13	24/48/110	4.16/2.08/0.90	Flange/foot	60
SPEM-002	200.0	09/15/30/60	1.26/0.63/ 0.32/0.16	24/48/110	8.32/4.16/1.80	Flange/foot	60
SPEM-010	500.0	09/15/30/60	3.15/1.55 /0.73/0.36	24/48/110	20.8/10.4/4.54	Flange/foot	70
SPEM-020	735.0	09/15/30/60	4.40/2.19 /1.1/0.55	48/110/200	16.8/6.68/3.67	Flange/foot	70
SPEM-050	1000.0	09/15/30/60	6.30/3.10 /1.55/0.76	48/110/200	20.1/9.09/5.00	Flange/foot	60
SPEM-100	1500.0	09/15/30/60	9.55/4.77 /2.38/1.68	48/110/200	30.2/13.6/7.50	Flange/foot	60
SPEM-200	2000.0	09/15/30/60	12.60/6.20/3.1/1.55	48/110/200	18.1/10.0/5.0	Flange/foot	60

Electrical Specifications of Traction motors :

Generated power: 50-5000 Watts
 Armature vol/current: upto 200 v/30 amps -
 NO-voltage: 240 +/- 5% of rated voltage (rms)
 Direct axis-Armature reactance/pole: 0.1-0.2% ohm p.u.
 Quadrature axis armature reactance/pole: 0.005 - 0.01% ohm p.u.
 Armature resistance per pole: 0.05 -0.1 %p.u. ohm
 Rpm: from 6000-300 Rpm
 Pole: 4/8/12 no
 Nominal torque: as in data sheet.
 Overall electrical efficiency: approx 85%
 Frame diameter: 2.5-4" with flange mounting
 Frame length: 2"-6" ;Shaft diameter: 2"
 Coupling: star
 Cooling: forced cooling
 Additional:n.a.
 Insulation: class - H
 Noise level:-as per rule/practices

Three numerals x 100 after SPEM indicates Electronic drive module with tailor made specifications are also offered.

MOTORON SEMICONDUCTORS CORPORATION

33, Shri nagar colony, shakti nagar extension, DELHI-110052. Tel:011-23644180/23655454
 e.mail: motoron@hotmail.com